

Maldives Land and Survey Authority,

MINISTRY OF HOUSING AND INFRASTRUCTURE

Ameenee Magu, Maafannu, Male', 20392, Maldives.

Office (PABX): +(960) 3004300, Fax: +(960) 3004254

Email: survey@mhe.gov.mv

Web: www.surveyofmaldives.gov.mv, www.mhe.gov.mv



CONTROL POINT DETAILS	Station Number	PSM 5169
Coordinate Information		
Geodetic	Grid	
WGS 84	UTM Zone 43	
Lat:	E:	267,938.995m
Long:	N:	395,388.472m
Ellp Height:	Orth Height:	4.193m
Island Name:	ADh Kudarah	
Date:	27/12/2014	

Monument description & method of survey:

300x300x300 millimetre in-situ concrete block with 12 nails to reinforce the concrete touching the tank. SS bolt was used as PSM pin point.

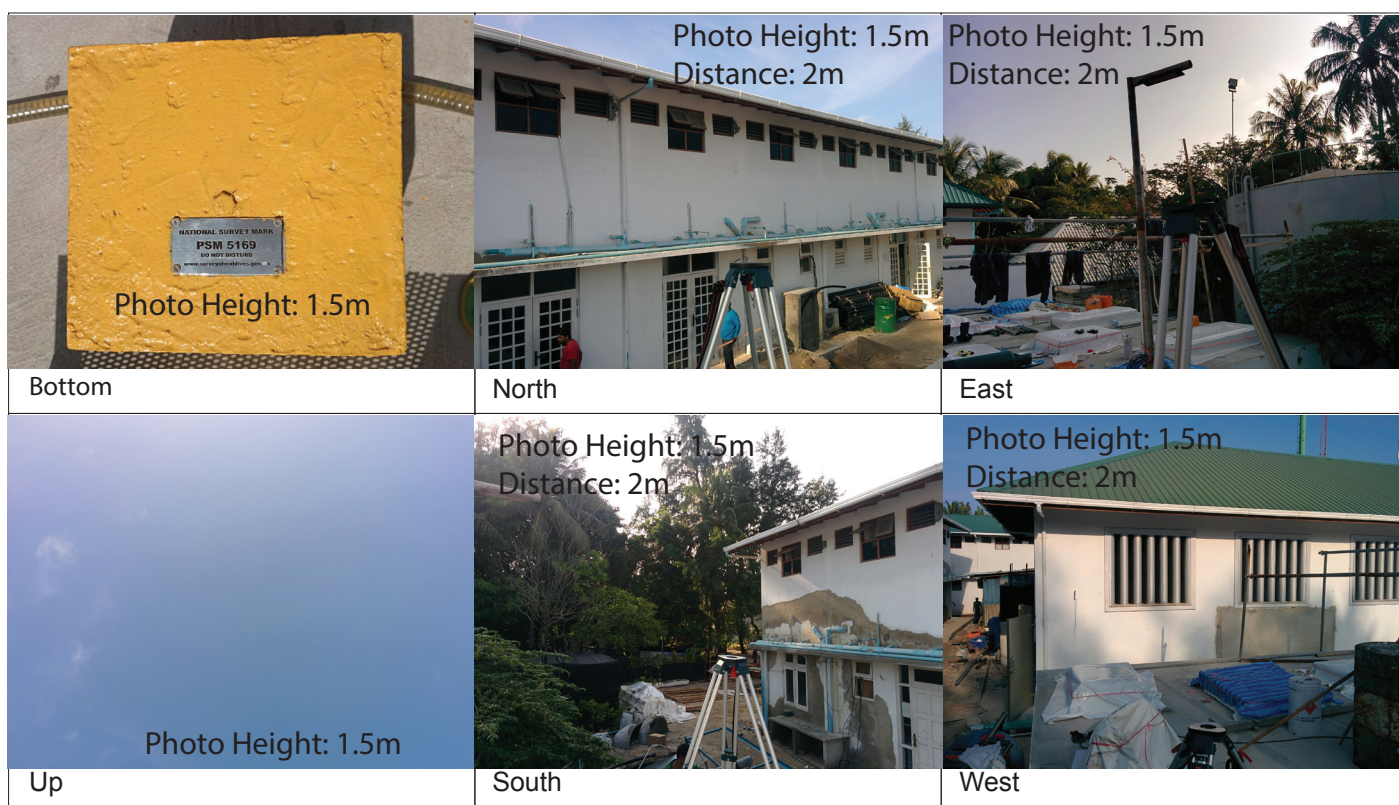
GNSS static observation for 20mins and post processed.

Vetricial height transfered suing Static GNSS from tide corrected PSM5171

General site condition & access:

On a sever tank inside staff quater with easy access and good sky view

Owner: Yacht Tours Maldives



SITE INFORMATION

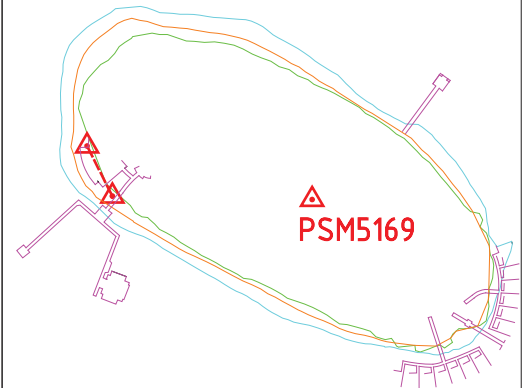
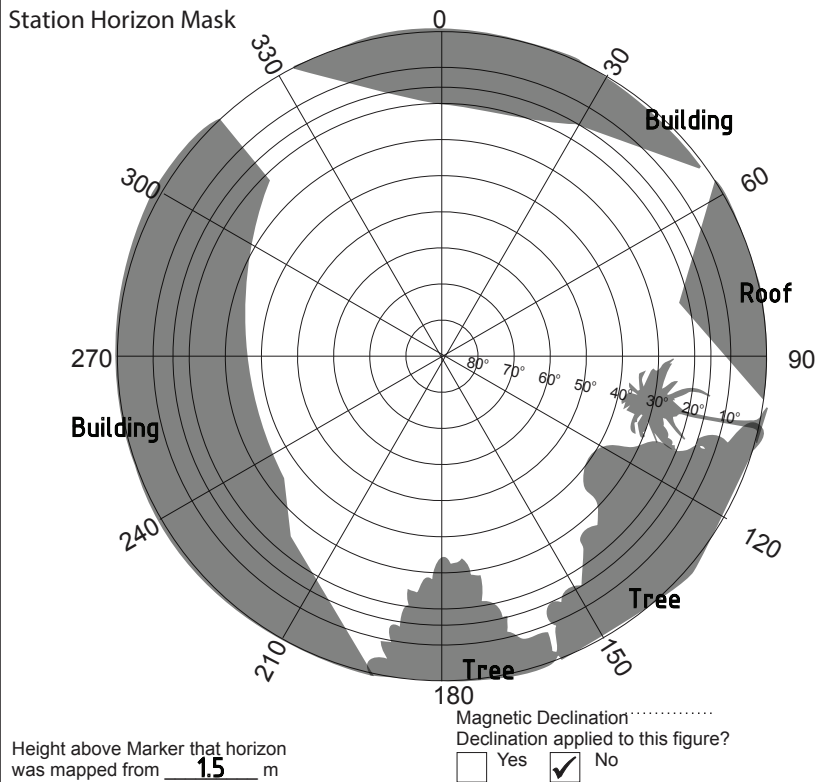
Station Number

P S M

5 1 6 9

Station Horizon Mask

Locality



Height above Marker that horizon was mapped from 15 m

Magnetic Declination
Declination applied to this figure?
☐ Yes ☒ No



SEVER TANK TOP

WALKWAY

FUEL TANK

WORKSHOP

SEVER TANK LOWER LEVEL

WALKWAY

BUILDING

4.82m

0.70m

2.08m

PSM5169

Sketched by: **Munah Ahmed**

Scale: Not to scale

Date: **27 Dec 2014**

Maldives Land and Survey Authority,

MINISTRY OF HOUSING AND INFRASTRUCTURE

Ameenee Magu, Maafannu, Male', 20392, Maldives.

Office (PABX): +(960) 3004300, Fax: +(960) 3004254

Email: survey@mhe.gov.mv

Web: www.surveyofmaldives.gov.mv, www.mhe.gov.mv



CONTROL POINT DETAILS	Station Number	PSM 5170
Coordinate Information		
Geodetic	Grid	
WGS 84	UTM Zone 43	
Lat:	E:	267,812.348m
Long:	N:	395,290.627m
Ellp Height:	Orth Height:	0.444m
Island Name:	ADh Kudarah	
Date:	27/12/2014	

Monument description & method of survey:

Type A Monument

Approx 500mm below ground




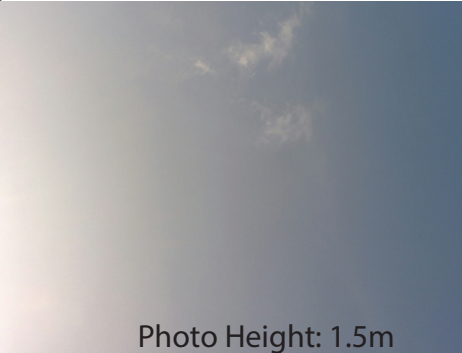


GNSS static observation for 20mins and post processed.

Vetrical height transfered using Static GNSS from tide corrected PSM5171

General site condition & access:

On the beach next to main jetty and easy access. Fairly clear sky view.

Owner: Yacht Tours Maldives

 Photo Height: 1.5m	 Photo Height: 1.5m Distance: 2m	 Photo Height: 1.5m Distance: 2m
Bottom	North	East
 Photo Height: 1.5m	 Photo Height: 1.5m Distance: 2m	 Photo Height: 1.5m Distance: 2m
Up	South	West

SITE INFORMATION

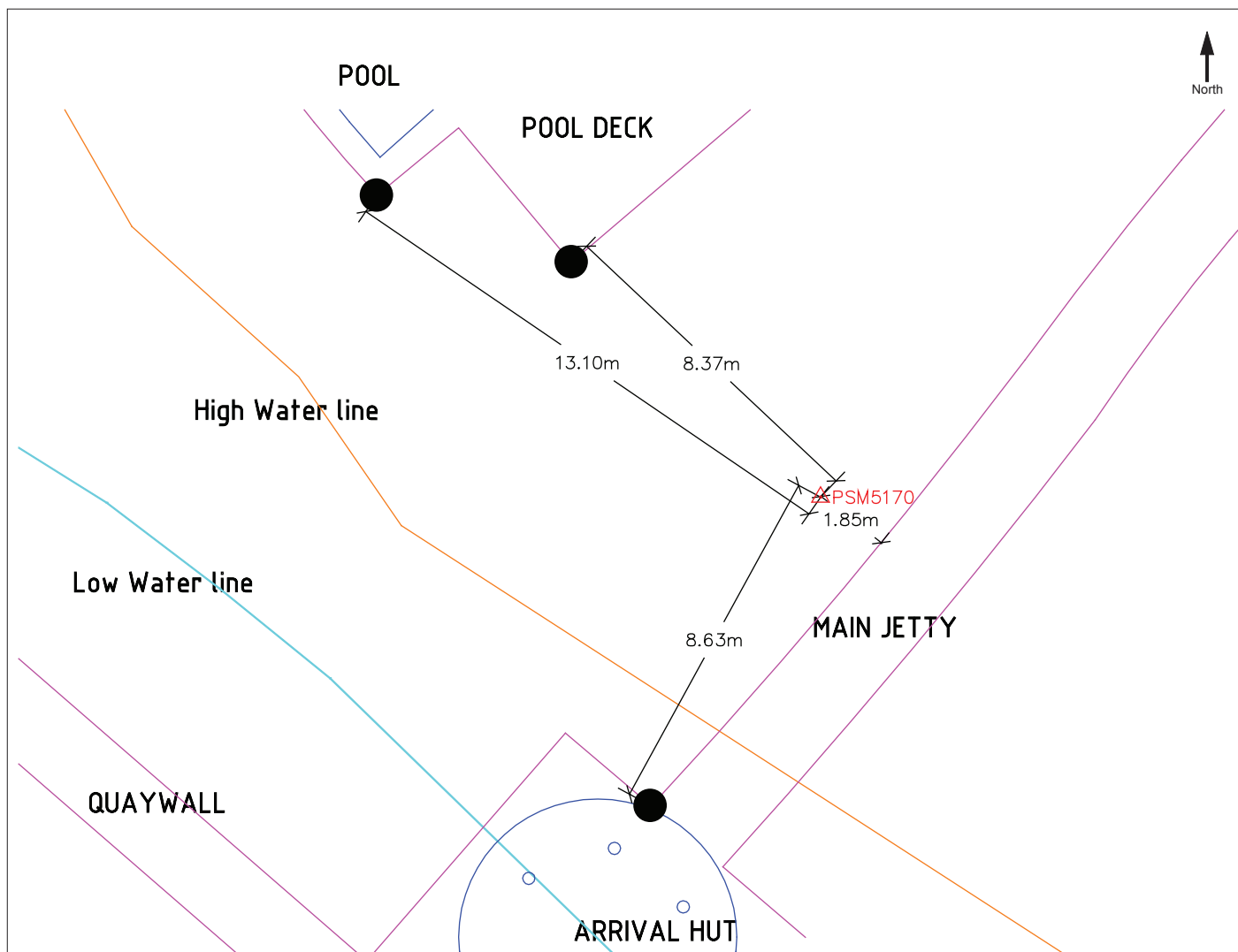
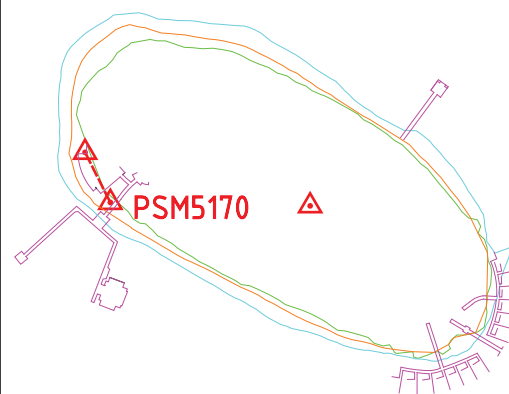
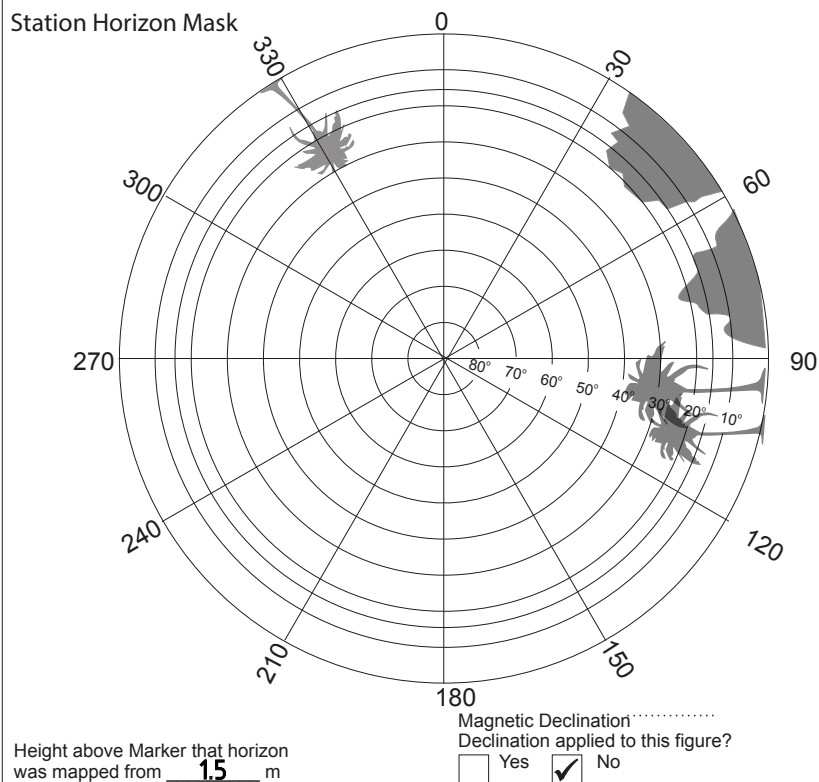
Station Number

P S M

5 1 7 0

Station Horizon Mask

Locality



Sketched by: **Munah Ahmed**

Scale: Not to scale

Date: **27 Dec 2014**

Maldives Land and Survey Authority,

MINISTRY OF HOUSING AND INFRASTRUCTURE

Ameenee Magu, Maafannu, Male', 20392, Maldives.

Office (PABX): +(960) 3004300, Fax: +(960) 3004254

Email: survey@mhe.gov.mv

Web: www.surveyofmaldives.gov.mv, www.mhe.gov.mv



CONTROL POINT DETAILS	Station Number	PSM 5171
Coordinate Information		
Geodetic	Grid	
WGS 84	UTM Zone 43	
Lat:	E:	267,796.324m
Long:	N:	395,322.473m
Ellp Height:	Orth Height:	1.037m
Island Name:	ADh Kudarah	Date: 27/12/2014

Monument description & method of survey:

Type A Monument

Apporx 300mm below ground

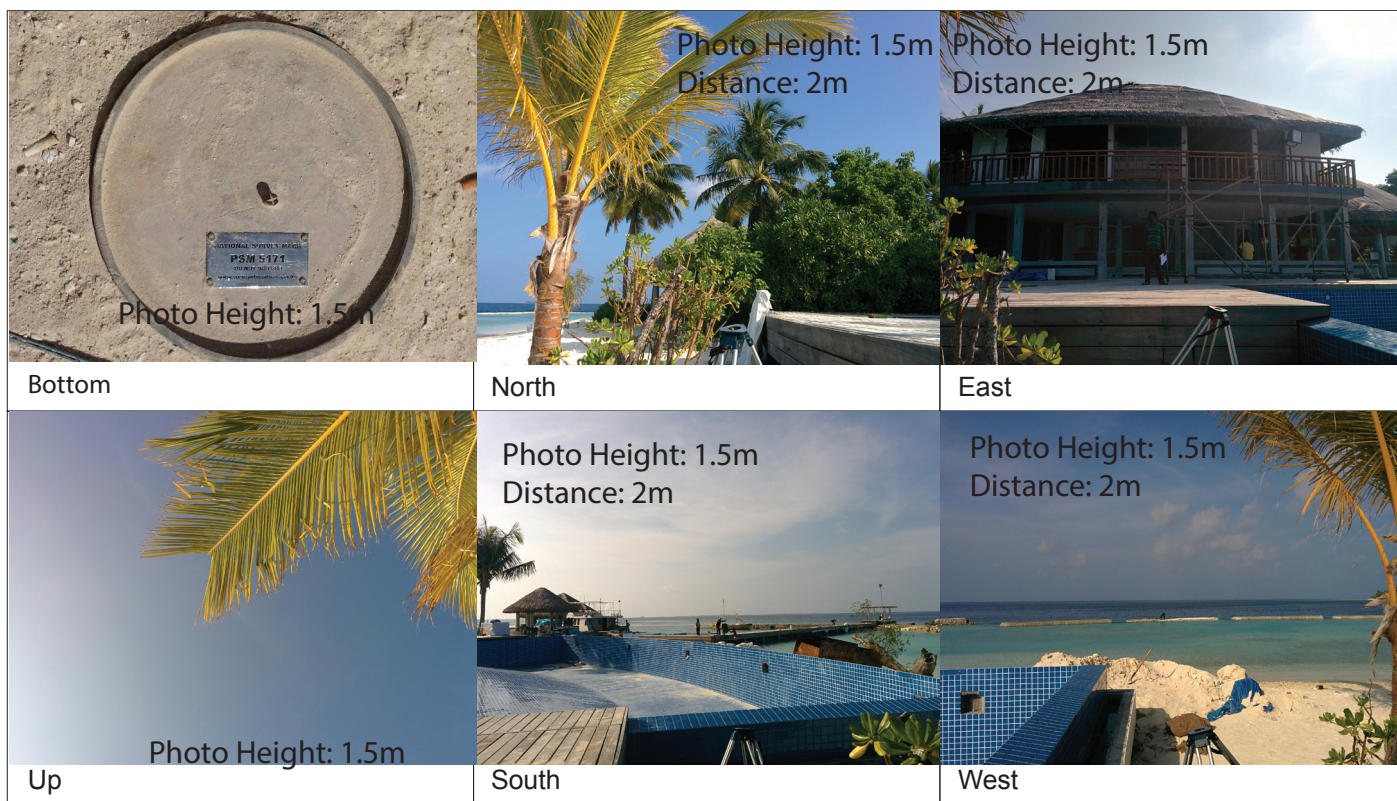
GNSS static observation for 20mins and post processed.

Tide corrected by transferring water level and calculated from tide formula by LINZ

General site condition & access:

On the beach next to swimming pool and easy access. Fairly clear sky view.

Owner: Yacht Tours Maldives

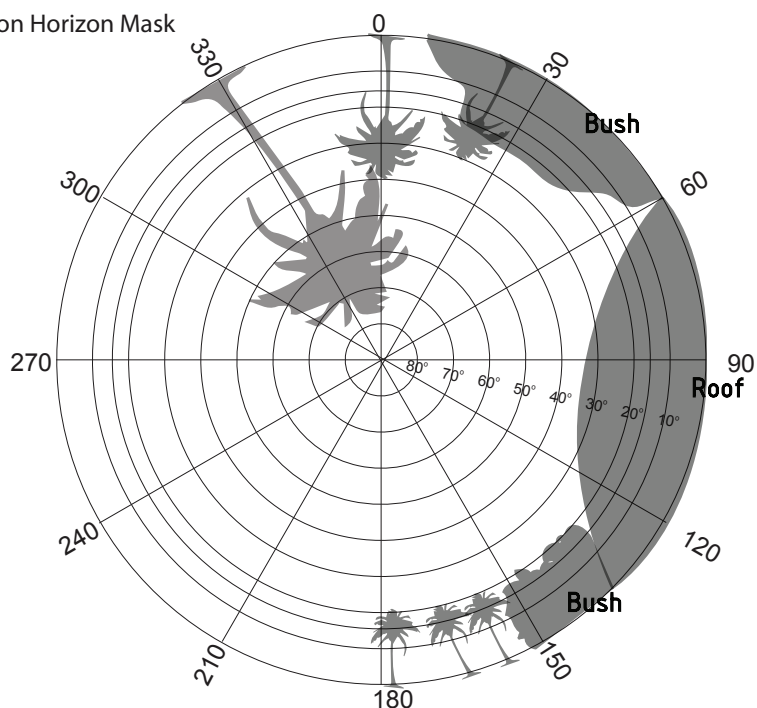


SITE INFORMATION

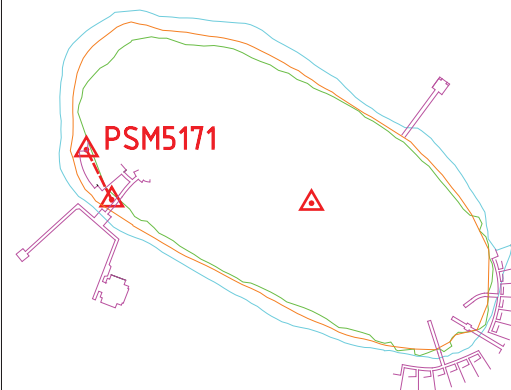
Station Number

P S M 5 1 7 1

Station Horizon Mask



Locality



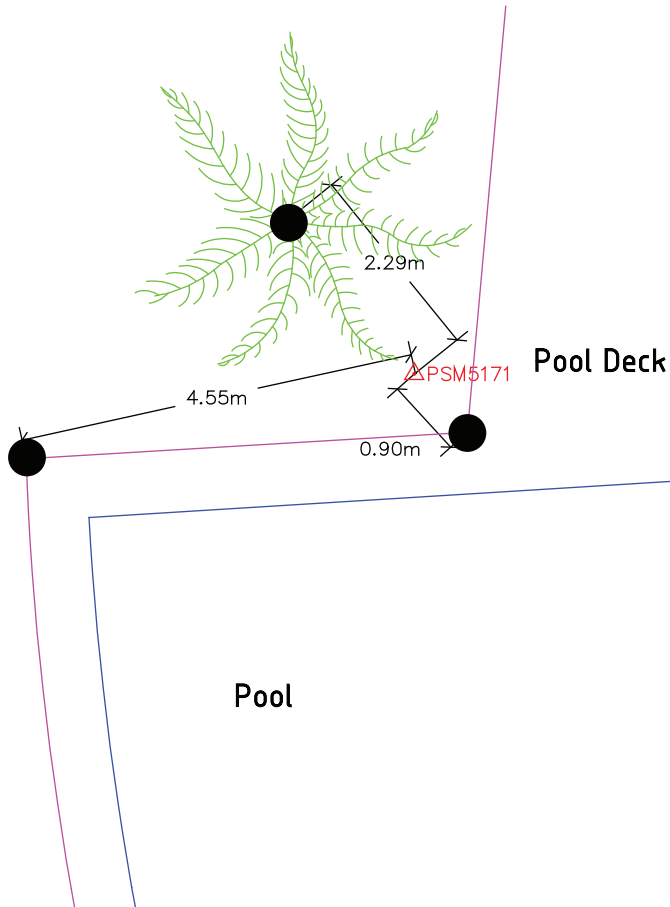
Height above Marker that horizon was mapped from 1.5 m

Magnetic Declination
Declination applied to this figure?

☐ Yes ☒ No



Beach



Sketched by: **Munah Ahmed**

Scale: Not to scale

Date: **27 Dec 2014**

MALDIVES LAND AND SURVEY AUTHORITY, MINISTRY OF HOUSING AND INFRASTRUCTURE, Ameene Magu, Maafannu, Male', 20392, Maldives,
Office (PABX): +(960) 3004300, Fax: +(960) 3004254, Email: survey@mhe.gov.mv, Web: www.surveyofmaldives.gov.mv, www.mhe.gov.mv